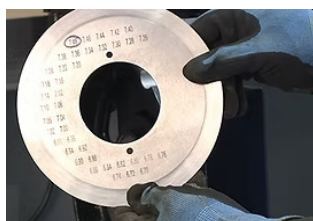


## Accu-set Series V

Modular mounting options provide easy retrofit to most OEM Knife Holders



### Read it!

JSI Mill Solutions regional service centers will circle the diameter of the blade after sharpening.



### Set it!

At installation, the operator reads the circled diameter and sets the Accu-Set depth dial to the corresponding value.



### Forget it!

The holder is set to the correct depth for the bottom band location the FIRST TIME, EVERY TIME!



### Safety Features & Benefits

- Reduces operator contact with a shape blade
- Safe and fast tool-free slitter blade removal
- Easy operator training for quick set-up
- Increased productivity and reduced downtime
- Adjustable lock in place cant angle
- Modular mounting options provide easy retrofit to any machine

### JSI CORPORATE OFFICE



135 Celtic Blvd.  
P.O. Box 160  
Tyrone, GA 30290



[jsimillsolutions.com](http://jsimillsolutions.com)



770-632-8575



[sales@jsimillsolutions.com](mailto:sales@jsimillsolutions.com)

"Training a winder operator on slitter set-up has been almost a 'non-event.' What used to take months to train on depth setting, side load pressure, and more has been removed because it is set up the same way every time. In addition, we have seen cost savings in blade regrinds from the previous year."

- Client in the Northwest, Assistant Superintendent